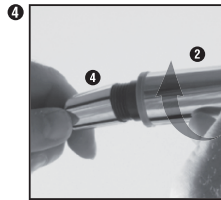
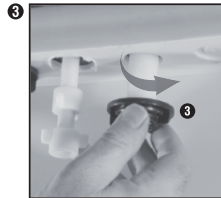
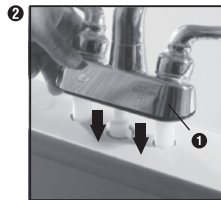


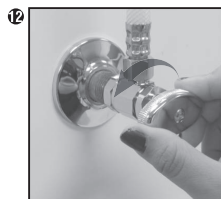
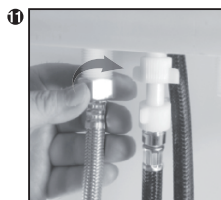
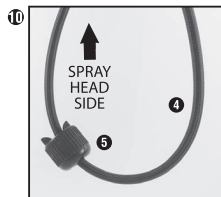
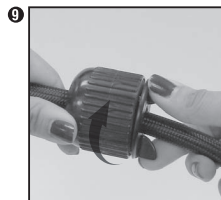
Assembly (Steps 1-4)

1. Shut off the water supply from the stop valves by turning the handle clockwise and remove the existing faucet from the laundry sink.
2. Set the faucet body (1) into the mounting holes of the laundry sink.
3. Thread the plastic mounting nuts (3) onto the shanks and hand tighten. **NOTE:** It is helpful to have a second person hold the faucet body in correct position on the sink while tightening the mounting nuts.
4. Thread the spray head (2) clockwise to the spray hose (4).



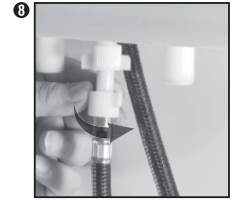
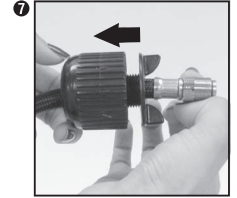
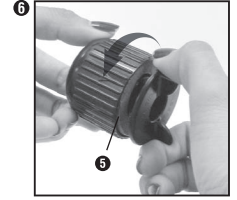
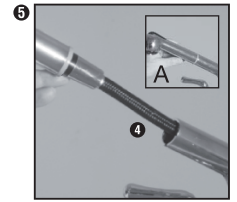
Assembly (Steps 9-12)

9. Slide the balance weight (5) to the desired position on the spray hose so it pulls the hose back in to the faucet. Turn the top of the balance weight clockwise to lock into position.
10. The balance weight (5) should be positioned just above the bend on the spray head side. Pull the spray hose (4) back and forth to check for smooth operation.
11. Attach one end of the water supply lines onto the faucet shanks, hot water on the left and cold water on the right. (**NOTE:** you should install new water supply lines, please refer to the supply line manufacturer's installation instructions.) Tighten the supply line connections using an adjustable or basin wrench.
12. Open the hot and cold water supply valves. Check for leaks at the shut-off valves and the faucet shanks. If leaks occur, tighten the connections slightly until the leak stops.



Assembly (Steps 5-8)

5. Insert the spray hose (4) through the spout channel on the faucet body until the spray head (2) sets into the spout end (see insert A).
6. Loosen the top of the balance weight (5) by turning it counter-clockwise.
7. Slide the balance weight (5) onto spray hose.
8. A black washer should be attached to the nut on the spray hose shank. If it has fallen out, insert the washer in to the nut, hollow end of washer first. The nut should face down and have the larger finger tabs. Attach the spray hose end to the nut and tighten.



Assembly (Step 13)

13. Remove the spray head (2) from spray hose (4). Point the spray hose at the drain and turn on the faucet, both hot and cold. Run fully open for at least a minute; this will flush out any sediment that may have been dislodged during installation. While the water is still running, check for leaks at the spray hose connection underneath the faucet deck and at all drainage connections. If leaks are found, tighten slightly until leak stops. Re-attach the spray head to the spray hose.

