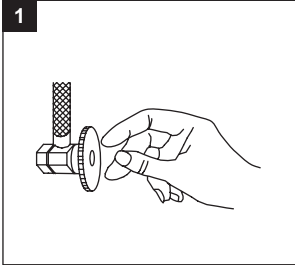


Thank you for purchasing this Wasserman® faucet. Anything missing or damaged, please do not return to the place you purchased. Call Toll Free at 1-866-670-6190 and we will send you replacements.

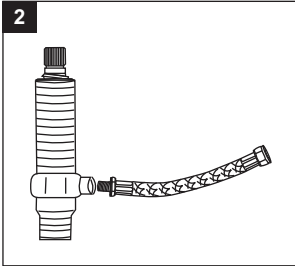
INSTALLATION INSTRUCTIONS TO INSTALL GARDEN TUB FAUCETS

1. Turn off water at the supply valve under the sink or at the main water supply, disconnect the supply line, and remove old faucet.

Clean and dry surface area where new faucet will be mounted.

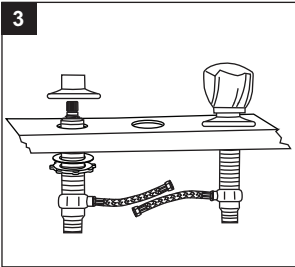


2. Wrap end valves with teflon tape. Connect flexible hoses to end valves. Wrench tighten.

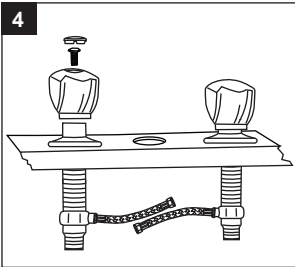


3. Thread locknuts onto end valves and add flat locknut washers.

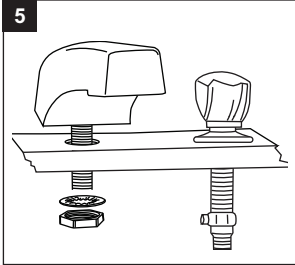
Insert a shank from under the ledge. Attach a flange to secure it. Adjust the flange to the desired height for the handle. Make sure the hose inlet is facing the center and tighten the locknut under the ledge. Tighten locknuts. Repeat to install the 2nd shank.



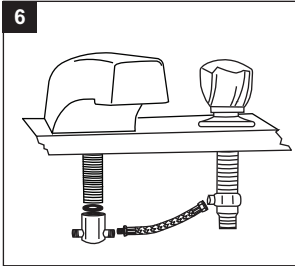
4. Install handles and secure with handle screws. Snap in hot and cold buttons.



5. Remove the backing from the spout gasket, slide it over the spout shank sticky side up and secure it to the bottom of the spout. Insert spout through hole in mounting surface. Slide crow foot washer onto shank. Wrench tighten after aligning the spout.



6. Place small black rubber washer into plastic tee. Screw tee onto spout shank. Connect flexible hoses to the tee, finger tighten. The end valves may have to be turned to align hoses onto the tee.

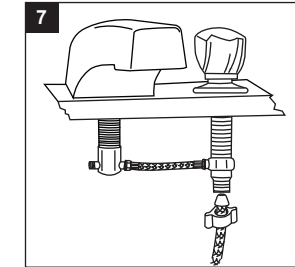


7. Attach water supply lines to end valves.

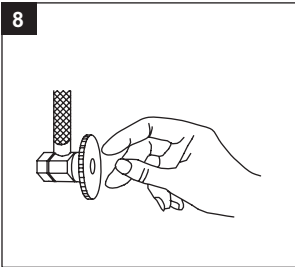
NOTE: Consumer should follow the directions on the supply line and if you have any questions about proper installation of the supply line, consult the manufacturer of the supply line.

NOTE: Do not use plumbers tape on connections, this will void the warranty. If the washer of the supply line is damaged, change to new one before install to the faucet.

DO NOT INSTALL SUPPLY LINE WITHOUT INSPECTION. Leakage will come from the supply line and possibly cause water damage to your house.



8. Turn water supply or shut-off valve back on and check for leaks. If leaks occur, tighten nuts slightly.



Limited Lifetime Warranty

This Wasserman® product is warranted to be free from defects in material or workmanship under normal use for the lifetime of the product. Any part of the product found to be defective during normal use will be replaced at our discretion. Warranty protects finish against tarnishing, flaking and discoloration. Warranty does not cover damage thorough accident, abuse, misuse, improper installation, etc. This warranty does not cover any losses, injuries or costs including indirect, incidental or consequential damages. This warranty covers the original purchaser only and may not be transferred or sold. When requesting warranty service please call toll-free 1-866-670-6190.